

# PNEUMATIC ACTUATOR OPTIONS & ACCESSORIES

## For Diaphragm Valves



The basic options and accessories listed in this section represent many of the most commonly used for Pneumatic actuation of Pneumatic Diaphragm Valves (see previous section for Pneumatic Ball Valves and Butterfly Valves). Contact Spears® for any desired accessories, options, functions, or special controls not listed. For differentiation, “Option” is used to identify a basic variation in the actuator while “Accessory” is used to identify an add-on function to the actuator. Both options and accessories are factory configured to order on the actuation package.

### Overview of Basic Options & Accessories Available

Pneumatic Actuator Features	Premium Pneumatic Diaphragm Valves
Spring Return	Option
80 psi Operating Pressure	Standard
Declutchable Manual Override	2-1/2 & Larger
Pneumatic Positioner	Air-to-Spring not Air-to-Air
Electro-Pneumatic Positioner	Air-to-Spring not Air-to-Air
Micro Limit Switch Module	Accessory
3-Way Solenoid Valve	Accessory
Stainless Steel 3-Gauge Set	Accessory
ID Tag - SS	Accessory

*Contact Spears® for any desired accessories, options, functions, or special controls not listed in this guide.*

### Spring Return (Fail Safe) (Air-to-Open or Air-to-Close) Option

Available for all Premium Pneumatic actuated valves. An internal spring in the actuator is configured to either open or close upon loss of air supply. Spring return can be specified as either Air-to-Open when spring return close is desired or Air-to-Close when spring return open is desired.

### Operating Pressure (for Diaphragm Valves)

Spears® Diaphragm Valves use a 80 psi standard, 40 psi - 60 psi optional operating pressure. Specify pressure requirements at time of order.

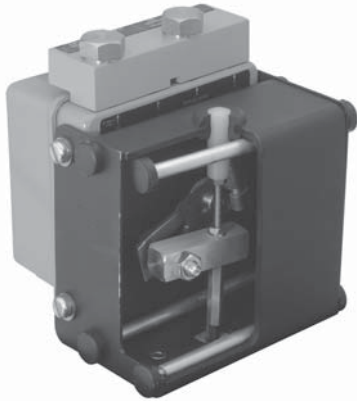
### 3 to 15 psi Pneumatic Positioner (for Diaphragm Valves)

Available for all Premium Pneumatic actuated Diaphragm Valves. Positioner is used to control or throttle flow by modulating the air to the actuator in response to an external 3-15 psi control signal input. Available with NEMA 4x enclosure mounted on top of actuator with 180° visual indicator. Positioner can be top or bottom loading, with or without gauges. Gauge set includes: 1 input pressure gauge 0-30 psi and 2 output pressure gauges 0-160 psi. Optional Stainless Steel gauge set available.





## PNEUMATIC ACTUATOR OPTIONS & ACCESSORIES For Diaphragm Valves



### Electro-Pneumatic Positioner (for Diaphragm Valves), not for air-to-air 4 to 20 mA

Available for all Premium Pneumatic Actuated Diaphragm Valves. Positioner is used to control or throttle flow by modulating the air to the actuator in response to an external 4-20 milliamp control signal input which is converted to a proportional 3-15 psi pneumatic signal used by the positioner. Available with NEMA 4x, enclosure mounted on top of actuator with 180° visual indicator. Used with air-to-spring only



### Micro Limit Switch Module (for Diaphragm Valves) SPDT (2) or DPDT (2)

Available for all Premium Pneumatic Actuated Diaphragm Valves. Module of two (2) auxiliary mechanical limit switches. Switches are SPDT rated at 10 amp 125/250 VAC. Switch module includes 180° visual indicator. Switch enclosure is NEMA 4/4x/7/9 rated.



### 3-Way Solenoid Valves 4-Way Solenoid Valves (for Diaphragm Valves)

Available for all Premium Pneumatic Actuated Diaphragm Valves. Universal operation design allows pressure to any port. 4-way solenoid valve is used for double acting (air-to-air) actuators. 3-way solenoid valve is used for spring return (fail open/fail close) actuators. Air inlet is 1/4" NPT. Enclosures are molded epoxy NEMA 4, 4x (standard) or NEMA 4/4x/7/9 combination with 1/2" conduit connection and brass body (stainless steel body available by special order). Standard 115 VAC with voltage options of 230 VAC, 24 VAC, 12 VDC, and 24 VDC.



### Custom ID Tag

Stainless steel valve/actuator ID Tag imprinted to user specified identification criteria. Each tag is 1/2" x 3" and accommodates up to 3 lines of text, maximum of 12 characters and spaces per line.